

REFRAL

Membro do Grupo **GU**



Automatismo SWING 3000-5000



Tecnologia ao serviço do cliente.



OPERATORS FOR SWING GATES

Electromechanical operators Swing — are an optimal solution for automation of residential and industrial swing gates, with medium to high intensity use. A predominant feature of these operators is the ability to install them on narrow columns. All Swing operators meet the highest safety standards and are adapted for use in different climatic conditions. The high quality materials and the frost resistant lubricants ensure a smooth operation in different climatic conditions (from -40 to +55 °C). Operating voltage range (from 180 to 250 V) allows you to use the operator in networks with unstable voltage. Swing gate operators are certified and meet all European quality standards.

MODEL RANGE

Swing-3000 operator for swing gates with leaf weight up to 400 kg and leaf width of up to 3 m.

Swing-5000 operator for swing gates with leaf weight up to 500 kg and leaf width of up to 5 m.

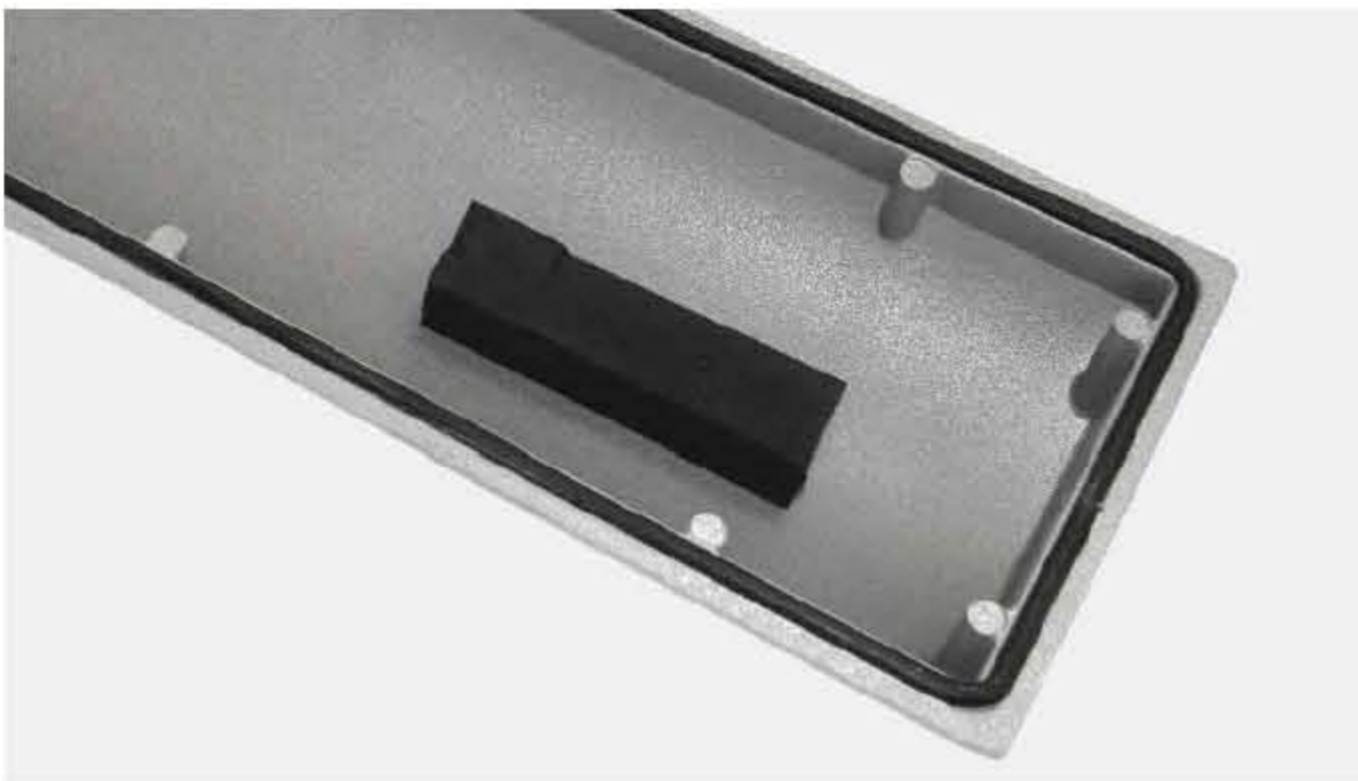
All components are made of high quality materials and comply with Directive 2002/95/EC (RoHS) limiting the content of harmful substances.



APPEARANCE AND DESIGN



All body elements are painted using powder method that creates an environmental friendly durable coating, which allows the operator to maintain its aesthetic appearance throughout the entire operation cycle.



01

The operator is made of high strength aluminum alloy and is protected from any kind of negative environmental effects. Special rubber seals make all connections of aluminum parts completely sealed (protection class IP54).



02

The lead screw is made of high strength steel and has improved kinematic characteristics. Double lead thread holds the grease in the friction zone, which significantly increases wear resistance of the transmission. In addition, this design helps to increase smoothness and reduce the noise level of the operator during its operation. Resource of the lead screw is designed for the entire life cycle of the operator.

Swing gate operators are equipped with non-reversible motor, which in combination with a special geometry of the lead screw, facilitates strong fixation and retention of the leaf in extreme positions even under heavy wind loads.



03

The nut is made of high-strength alloy steel and bronze that minimizes the coefficient of friction between the lead screw and nut; which greatly increases the life of the components.



04

Swing gate operators are equipped with planetary gear, the main advantage of which is a large ratio in a compact and a light weight body.



05

The operator is equipped with a release mechanism that allows you to open and close the gate manually in case of power failure. The release system is equipped with a special lock, designed to protect the operator against unauthorized release.



06

The release is ensured by a compact key with triangular groove. It is made of plastic with metal insert which guarantees a longer service life and eliminates the blurring of key edges.

Swing gate operator is equipped with an electromagnetic brake, which provides the most accurate stop of the gate leaf in the end positions and its further locking. This feature excludes the need of installation of additional locking devices.



07

Gear parts are made of steel and bronze, which increases the Swing-2500 operator service life.



08

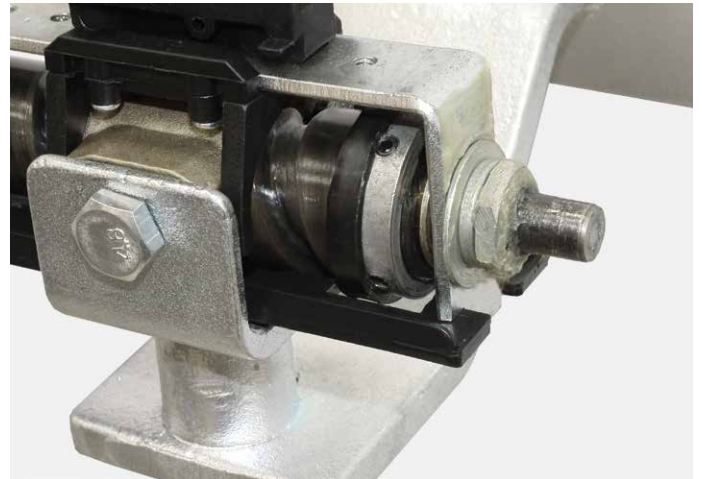
The advantages of swing gate operators are also the reliability and accuracy of limit switches system, which allows an accurate adjustment of the gate stop in end positions.

The operator stops in end positions on the limit switches, this significantly reduces the load on the nodes and increases its lifespan.



09

Besides the basic limit switches of opening and closing the gate, an additional backup limit switch is provided. The backup limit switch eliminates body damages due to overshoot of the main limit switch by the operating nut.



10

The operator Swing-5000 ensures the stop on the limiter, which is an additional guarantee of a smooth operation.



11
The construction of limit switches provides fine adjustment of the gate in end positions.



12
All necessary connections are made at the manufactory, which significantly reduces installation time.



13
The limit switches, the lead screw and the nut are protected against various negative environmental effects, by a robust aluminum body.



14
At the bottom these elements are closed by a plastic cover, which protects the lead screw from dust.



15
To quickly identify operator warranty period, production date, time, place of sale, as well as warranty card number — special marking is located on the body. The availability of this information is significantly reducing the standard execution time of warranty works.

CONTROL BOARD

The control board of swing operators is designed according to the latest requirements of electromagnetic compatibility, and includes all the necessary EMI filters. Filters allow the operator to continuously operate when exposed to unintentional radio interference, and prevent the occurrence of interference from other technical reasons.



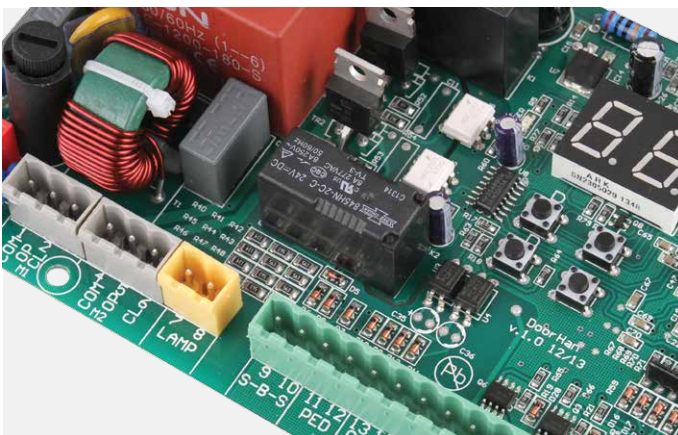
16

Multifunction control box for all motors Swing and ARM series (pcb-sw).



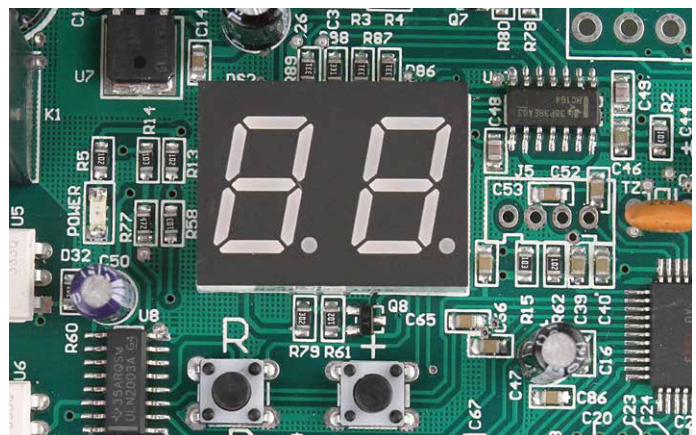
17

Basic control box for all motors Swing and ARM series (sw-mini).



18

Advantages of the control board are convenience and ease of configuration. All terminals on the board are undersign, this helps to make connections instinctively and very fast.



19

Frost resistant LED-display allows you to monitor all programming stages of the operator and receive information on the number of recorded remote controls.

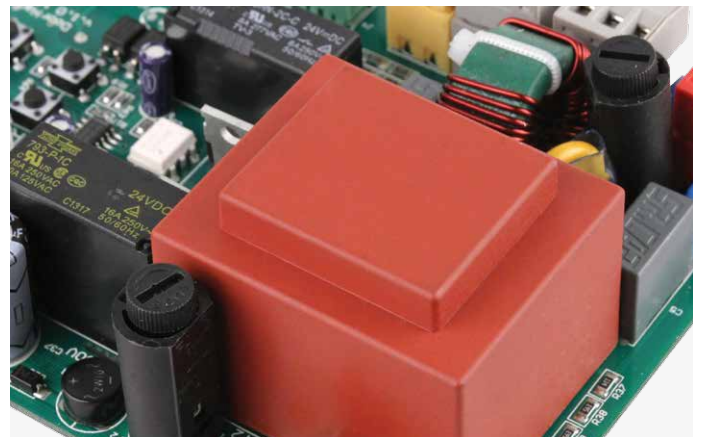
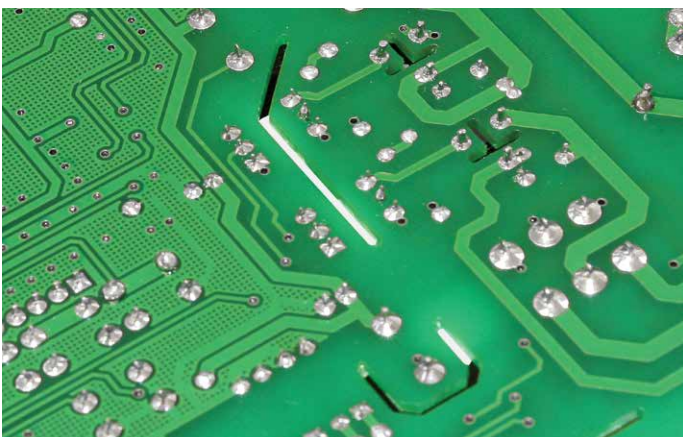
Availability of connectors allows you to connect a large number of additional control and safety devices such as photocells, which can be connected to both, opening and closing of the gate.

The control board has a number of technical solutions that makes the high quality and reliability its distinctive features.



20
Due to the increased cross-section of the winding wires and optimized core, the transformer has improved electrical characteristics.

21
Optimally matched operating voltage value of the varistor allows to protect the transformer and control board against high voltage impulse noise.



22
Reliable galvanic isolation between power and signal circuits eliminates the influence of the power circuits on the signal.

23
The input and output voltage is controlled by two fuses.

The emergency button “Stop”, can be connected to the control unit, allowing to stop the gate in case of emergency.

TECHNICAL SPECIFICATIONS

Swing	3000 PRO	5000 PRO
Supply voltage, V/Hz	220 / 50/60	
Maximum power consumption, W	150	
Maximum door weight, kg	400	500
Maximum leaf width, m	3	5
Intensity, %	50	
Temperature range, °C	40 to +55	
Degree of protection	IP54	



CERTIFICATES

CERTIFICADO ◆ CERTIFICAT



INSPECTION CERTIFICATE

File number 06.055.422 - rev 1

Issued by inspection body No. 4002 accredited by CAI to the organization:

DoorHan s.r.o.
 Královský vrch 2018
 432 01 Kadaň, Czech Republic

DoorHan s.r.o.
Královský Vrch 2018,
Kadaň 432 01,
Czech Republic

Page 1 of 1

Certificate of Compliance

Electrical Safety
For
Electric Drives For Gates

Date of Issue: 7th September 2011

SGS Reference: CST1515107/B

Details of Sample: Model No: SWING-3000 and SWING-5000
Unique Identifiers: Not Supplied

Date of Receipt: 2nd October 2010

Date of Test: 2nd October 2010 To 4th August 2011

Test Required: Test for compliance with:
BSEN 60335-1:2002 / IEC 60335-2-103:2003

Conclusion: In the configuration tested the sample meets the requirements of the standards detailed above.

Issue Number: 1

This document is issued by the Company under its General Conditions of Service accessible at www.sgs.com and is subject to the terms and conditions of the contract. Attention is drawn to the fact that the information contained herein reflects the Company's findings at the time of its intervention only and does not constitute a warranty. The Company's sole responsibility is to the Client and this document does not constitute part of a transaction. The Client's responsibility is to the Client and this document does not constitute part of a transaction. The Client's responsibility is to the Client and this document does not constitute part of a transaction. Any unauthorised alteration, forgery or falsification of the content or appearance of this document is unlawful and offenders may be prosecuted to the fullest extent of the law.

Unless otherwise stated the results shown in this test certificate refer only to the sample's test and each sample(s) are required for 4 weeks only. This document cannot be reproduced except in full, without prior approval of the Company.

The CE mark as shown below can be used, under the responsibility of the manufacturer, after completion of an EC Declaration of Conformity and compliance with all relevant EC Directives.




 Authorized Signatory
K. Hutchinson
 UK CTS Manager

SGS United Kingdom Ltd Unit 10, Boreham South Industrial Estate, Boreham, Essex SSO6 5AD Tel +44 (0)191 377 2000 Fax +44 (0)191 377 2000 Registered in England No. 1193853 Registrar of Companies, Essex Park, Chelmsford CM1 3EN www.sgs.com

Member of SGS Group (Société Générale de Surveillance)

sted under inspection report of TÜV in conformity of the below

ing 3000, 5000, (name of this SUD Czech is Swing 3000/5000)

ský vrch 2018, epublic

ocumentation mentioned therein, otherwise than as a whole unless mer, is inadmissible as well as its use by including all annexes. eeping conditions mentioned in the 5.806 - rev.2 issued on 2012-08-07


 i.r.o. : Ing. Roman Prásek Ph.D
 e Republic • prafication@ref-rod.cz
 KADAŇ, CZECH REPUBLIC






REFRAL

Membro do Grupo **GU**

Sede (Zona do Porto)

Rua Manuel de Assunção Falcão, 135
Lugar de Ferreiró – Lote 8 – Apartado 2134
4471-908 Castelo da Maia

geral@refral.pt

T. 229 867 340

F. 229 870 001

www.refral.pt

Filial Sul (Zona de Lisboa)

Rua Carlos Saraiva, 117
Abóboda
2785 – 543 São Domingos de Rana

sul@refral.pt

T. 219 343 599

F. 219 310 014

Tecnologia ao serviço do cliente

